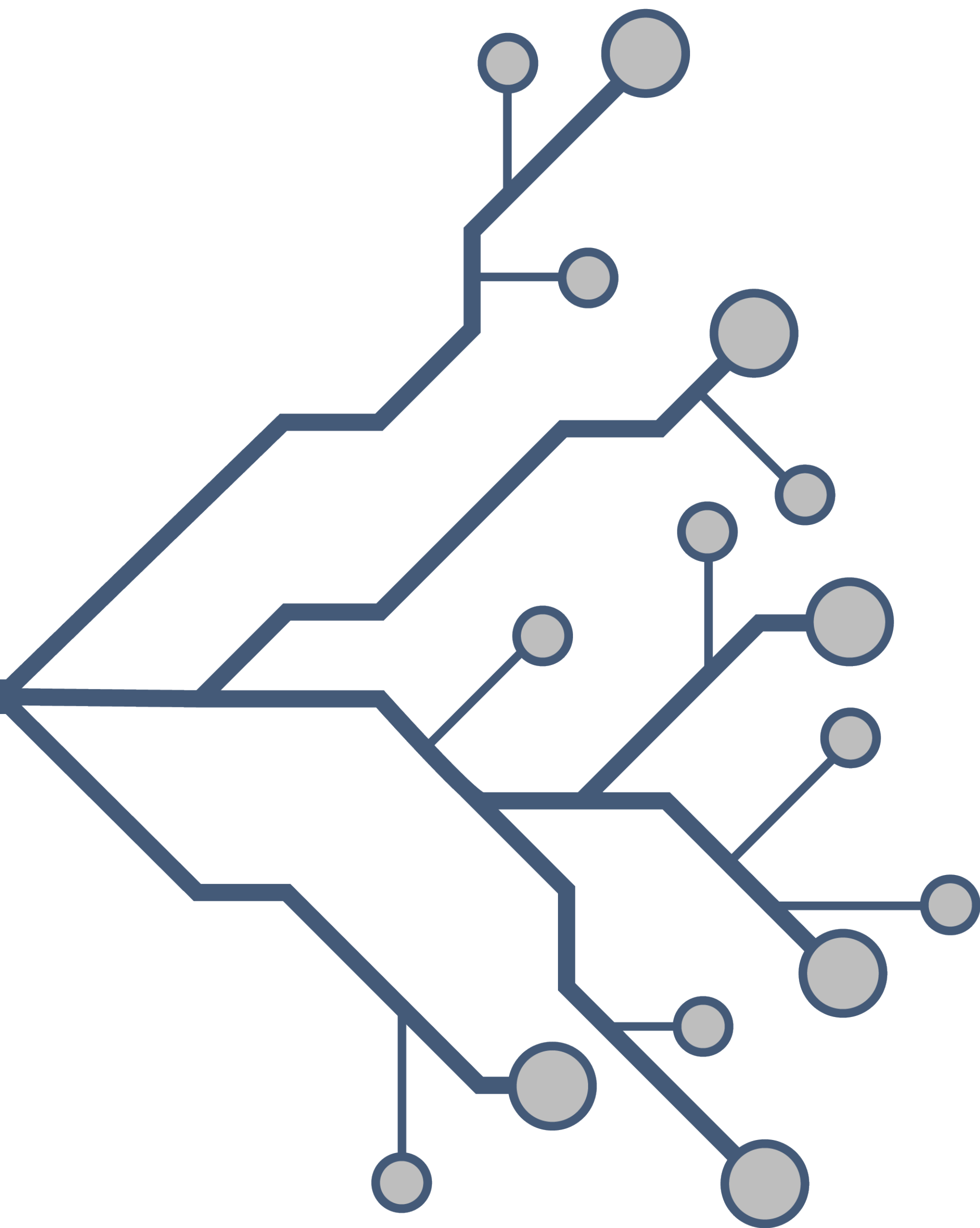


NEXT

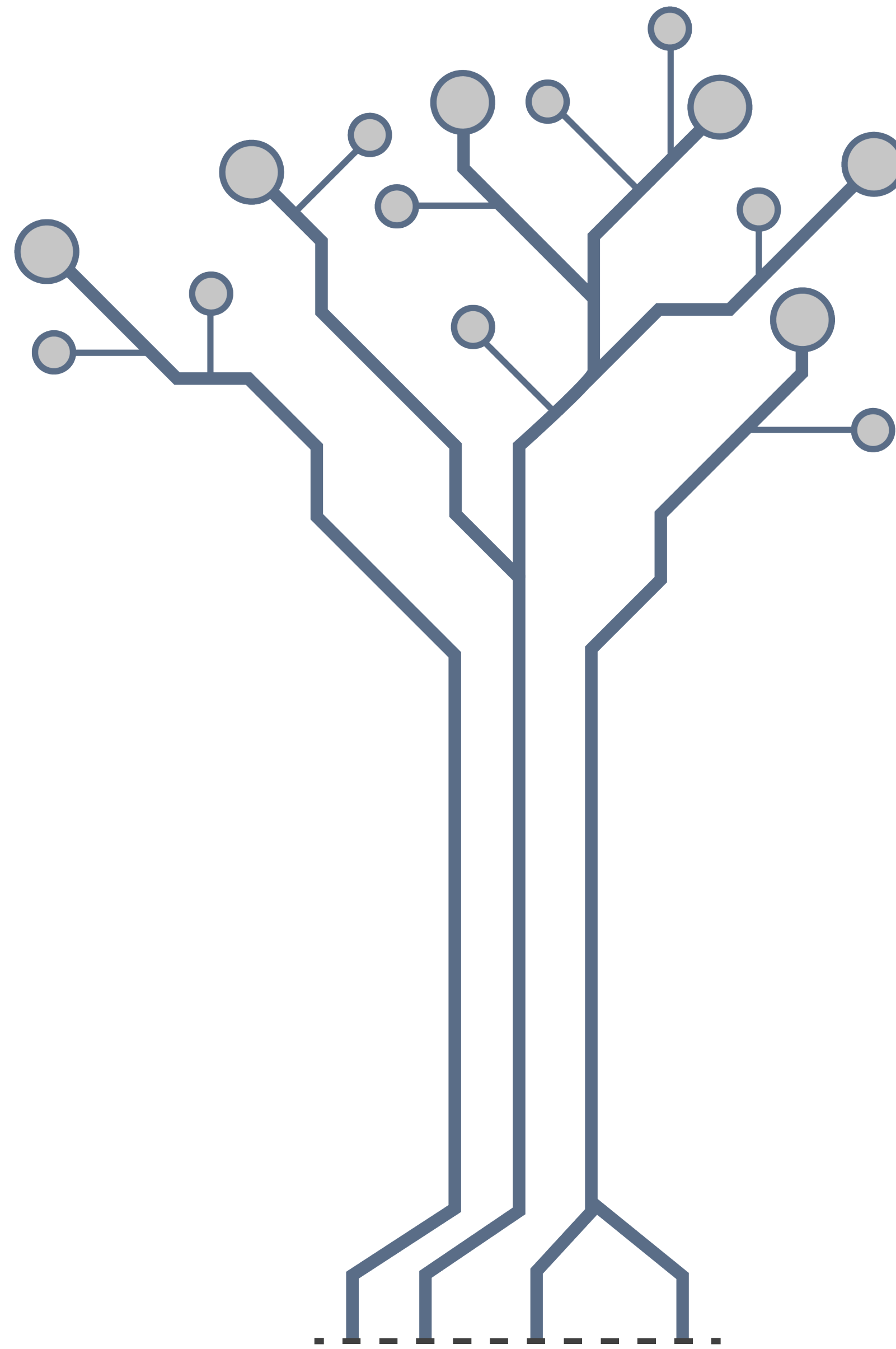
Steelcase





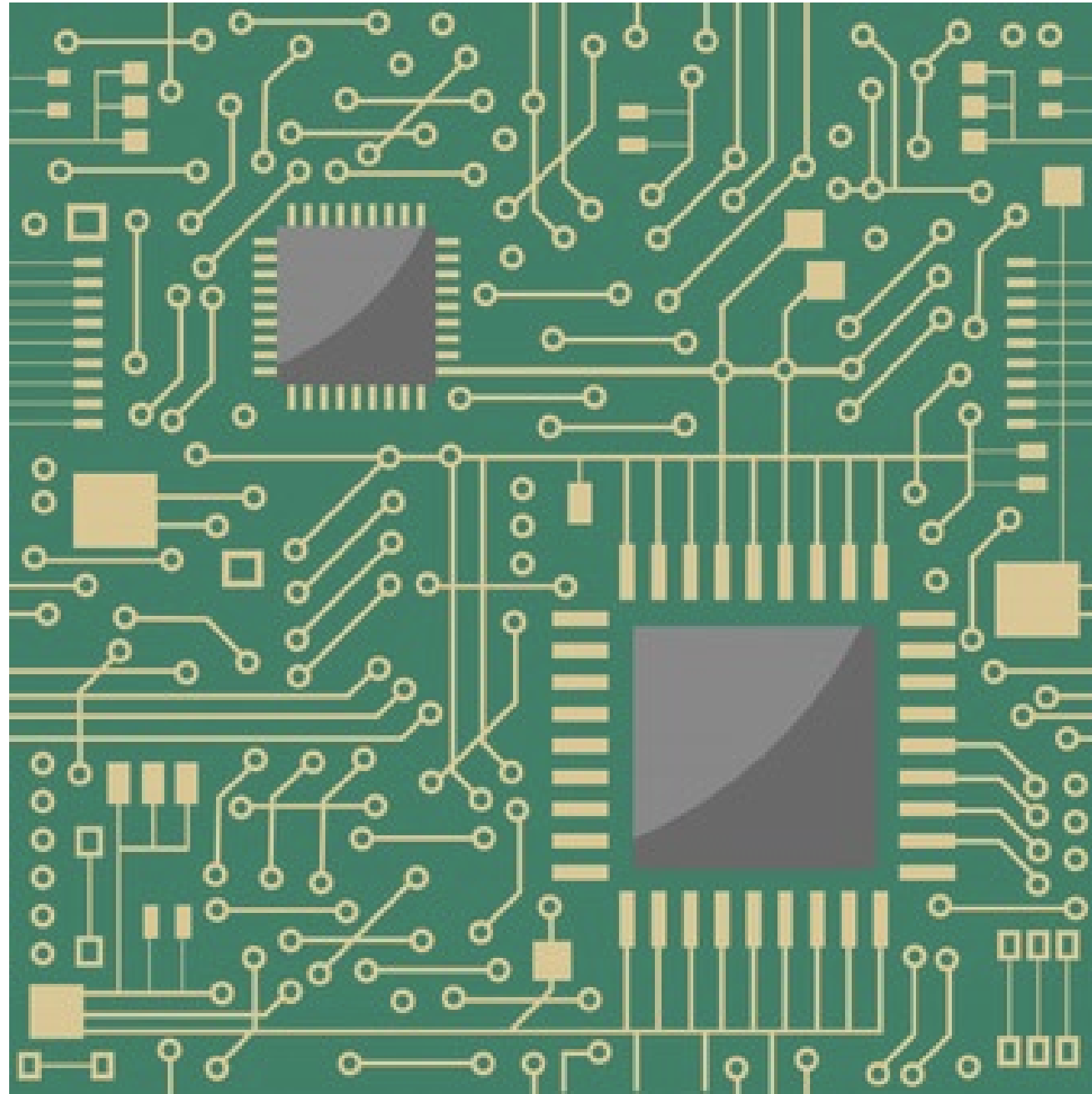
PROJECT LOCATION

Atlanta is the cultural and economic center of the metropolitan area, as well as the ninth-largest metropolitan area in the US. The space that is being used here is in the heart of the city, and in a much more affordable place to live as well. The technology industry is growing, and NEXT is taking part in it's growth to provide for that in it's new location. These considerations make for the ideal expansion for their office locations.



CONCEPT STATEMENT

NEXT is a technology company that prides its aspects on health and wellness. The company focuses on the beneficial aspects of technology in order to improve the overall wellbeing of clients and workers. The new design for the Atlanta NEXT office space is offering this in the way of integrated work spaces that allow staff to navigate and communicate efficiently throughout the work plane.



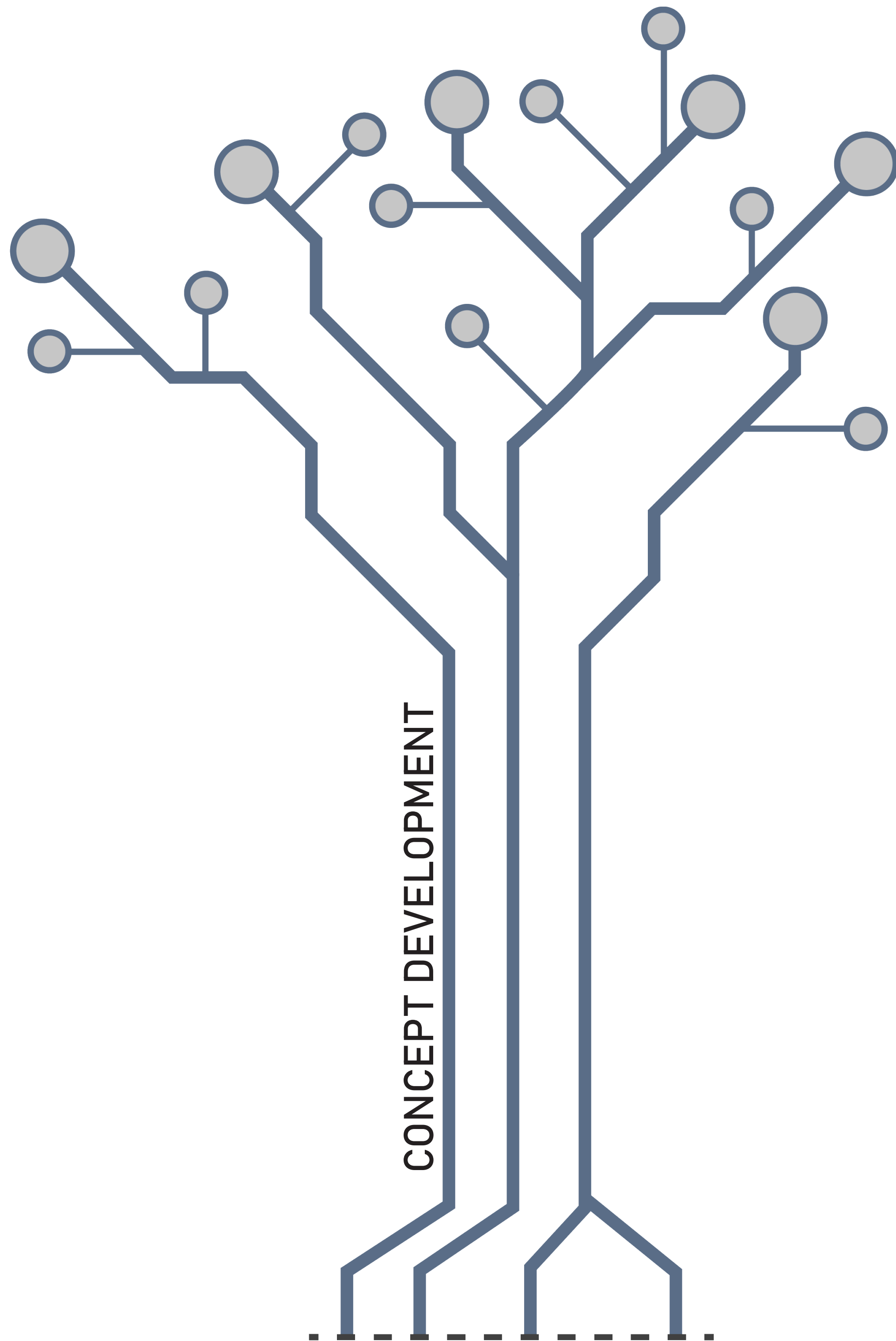
+



CONCEPT RESEARCH

The **Motherboard** in any piece of technology or computer hardware is the piece that connects all of the other corresponding pieces together. It's sole purpose is to give different pieces of technology the ability to communicate with one another. Jung (2016)

The **Tree** is a common and important part of the earth's ecosystem. In application to this aspect, the tree symbolizes an interest in wellness and beauty, as well and an interest to a property. With the integration of this, we can see a combination of technology and wellness throughout the work plane. Ellis (2019)



LEVEL 2:

Level 2 of the project represents the branches of a tree. Each space that lies of the level may not directly connect, but is an important part of the work plane. The ceiling elements that occupy the space demonstrate this by connecting the spaces with a decorative moving element that flows throughout the work areas. This level also houses all of the working spaces, like open offices, team spaces and conference zones where workers can collaborate and work efficiently.

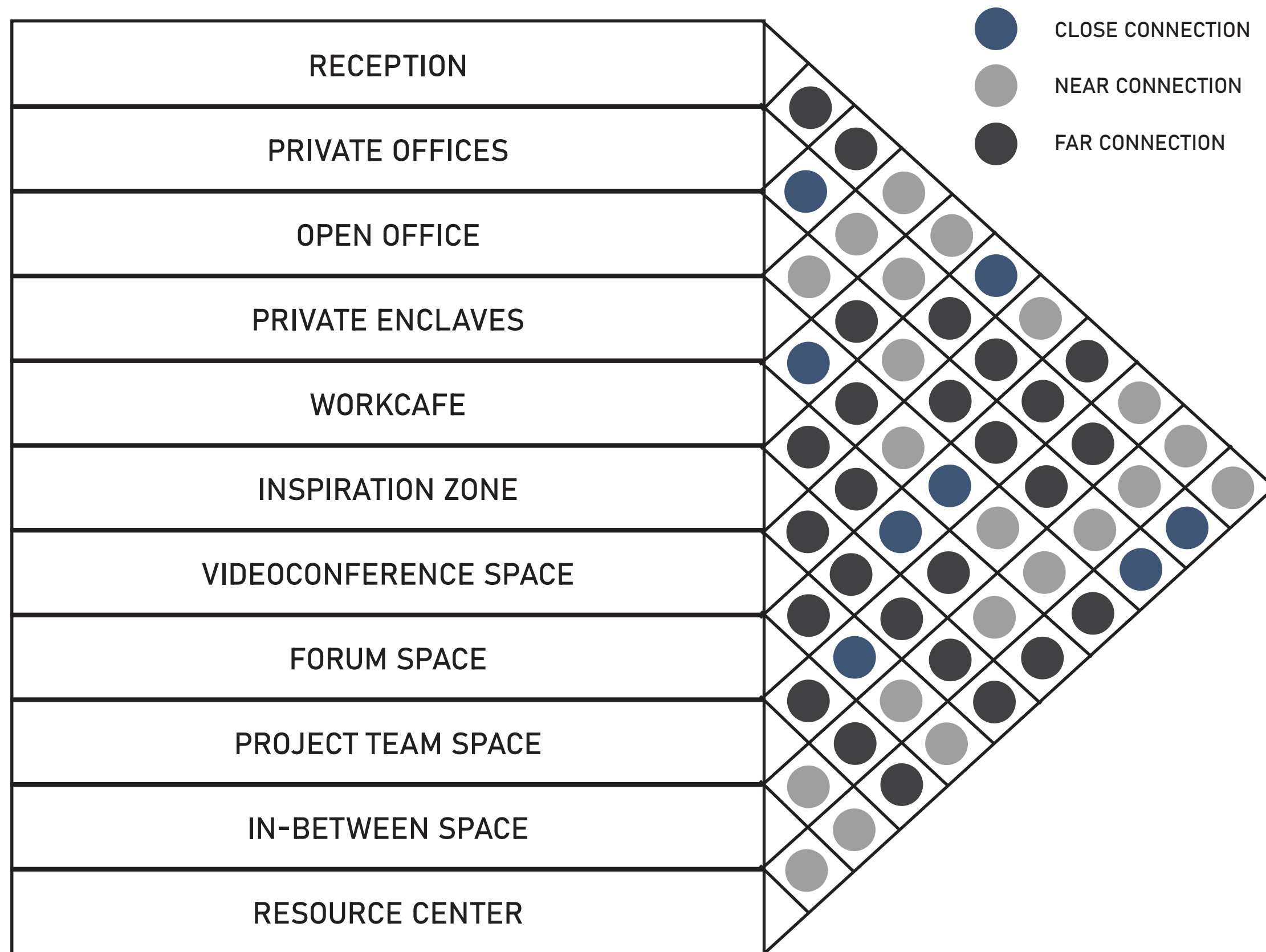
CIRCULATION:

The trunk of the tree represents the vertical circulation, connecting the first and second level of the work plane.

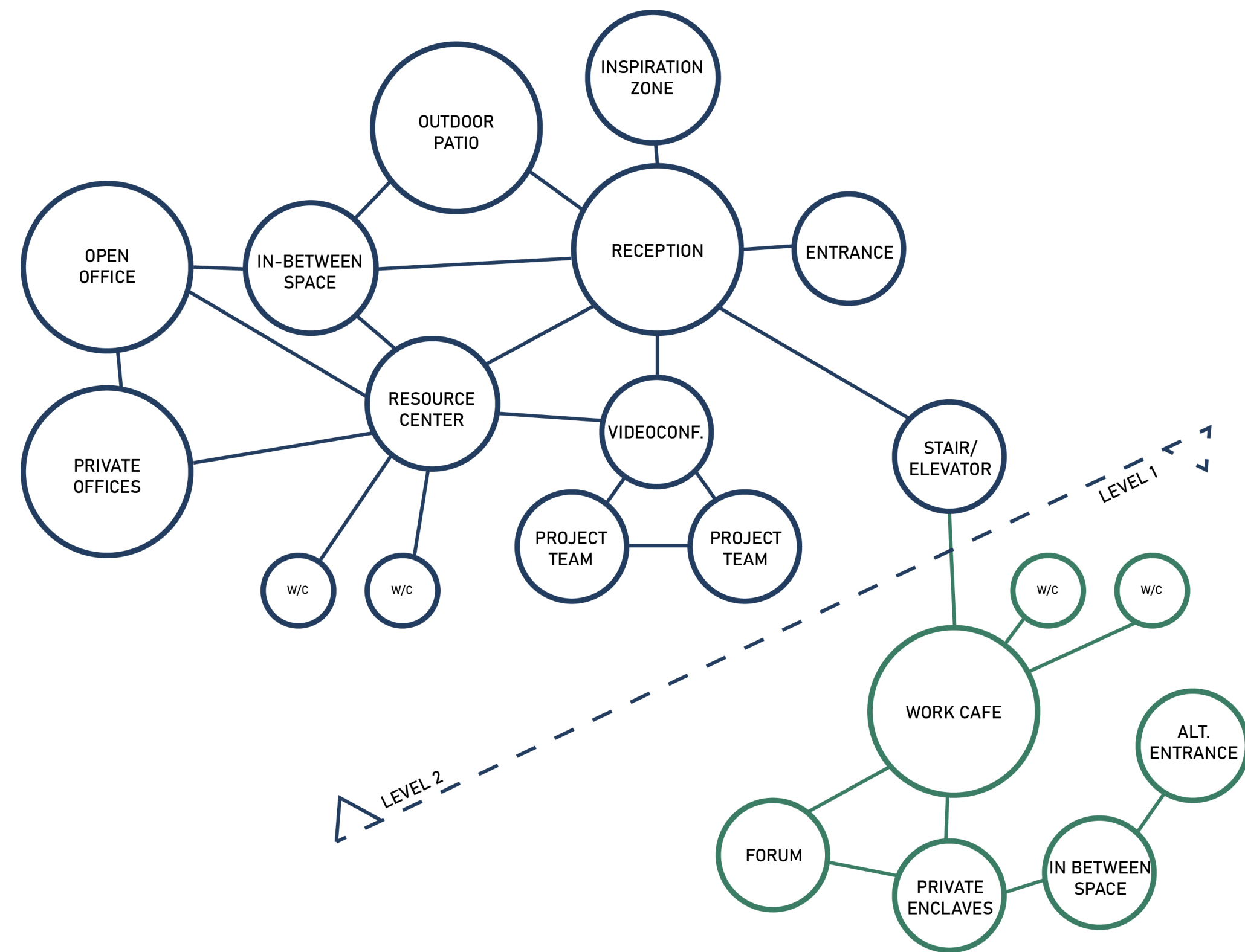
LEVEL 1:

Level 1 of the project represents the roots of a tree that help the tree stand and recuperate as needed. This level houses the work cafe, and the forum and private spaces where workers can rejuvenate and recover from the stress of the workplace.

ADJACENCY MATRIX



BUBBLE DIAGRAM



INSPIRATION TECHNOLOGIES

GUIDED CEILING FEATURES FOR SOUND ABSORPTION



fig. 1



fig. 2



fig. 3

ELEMENTS TO HELP GUIDE CIRCULATION

INDUSTRIAL ATMOSPHERE

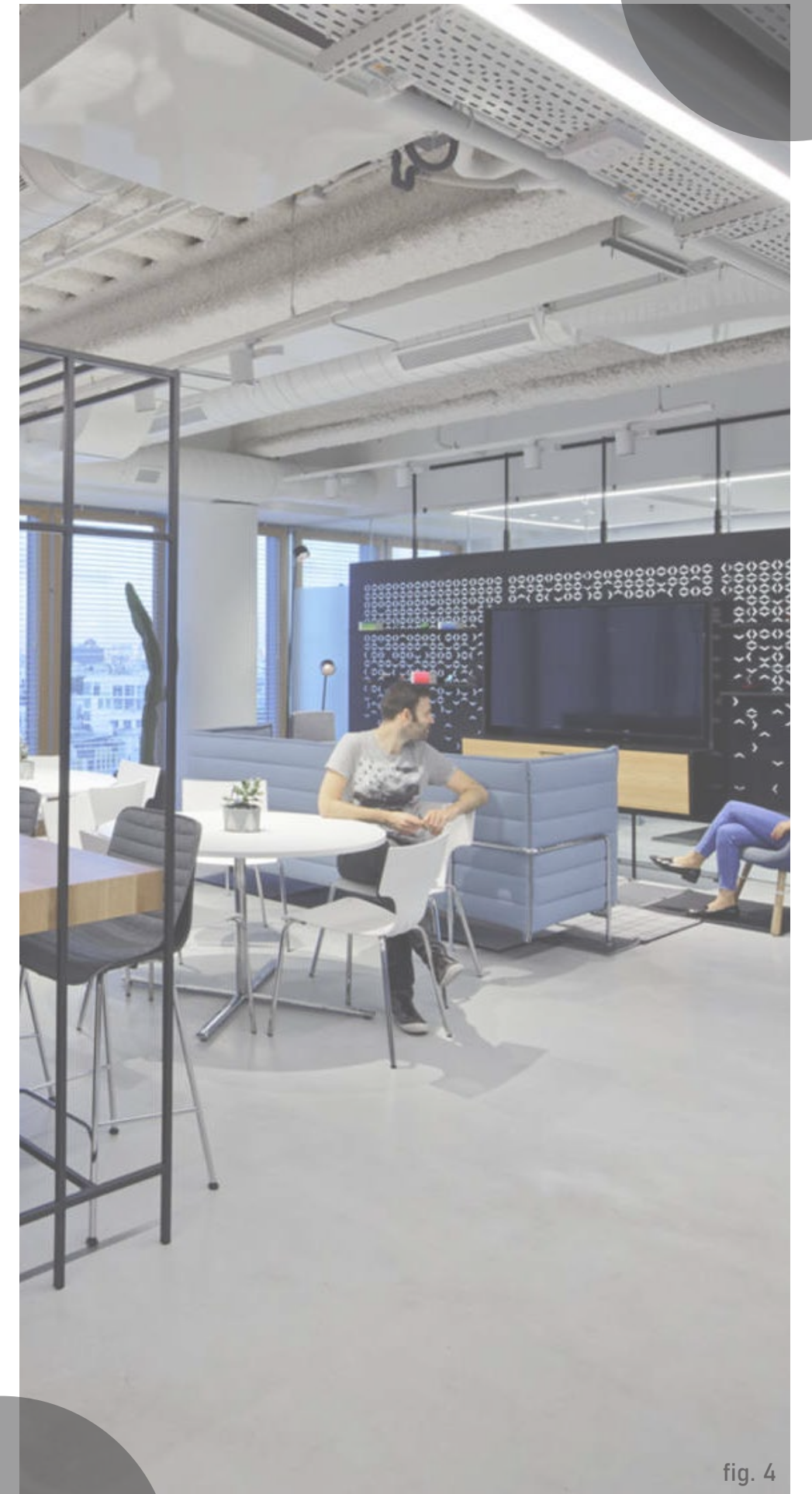
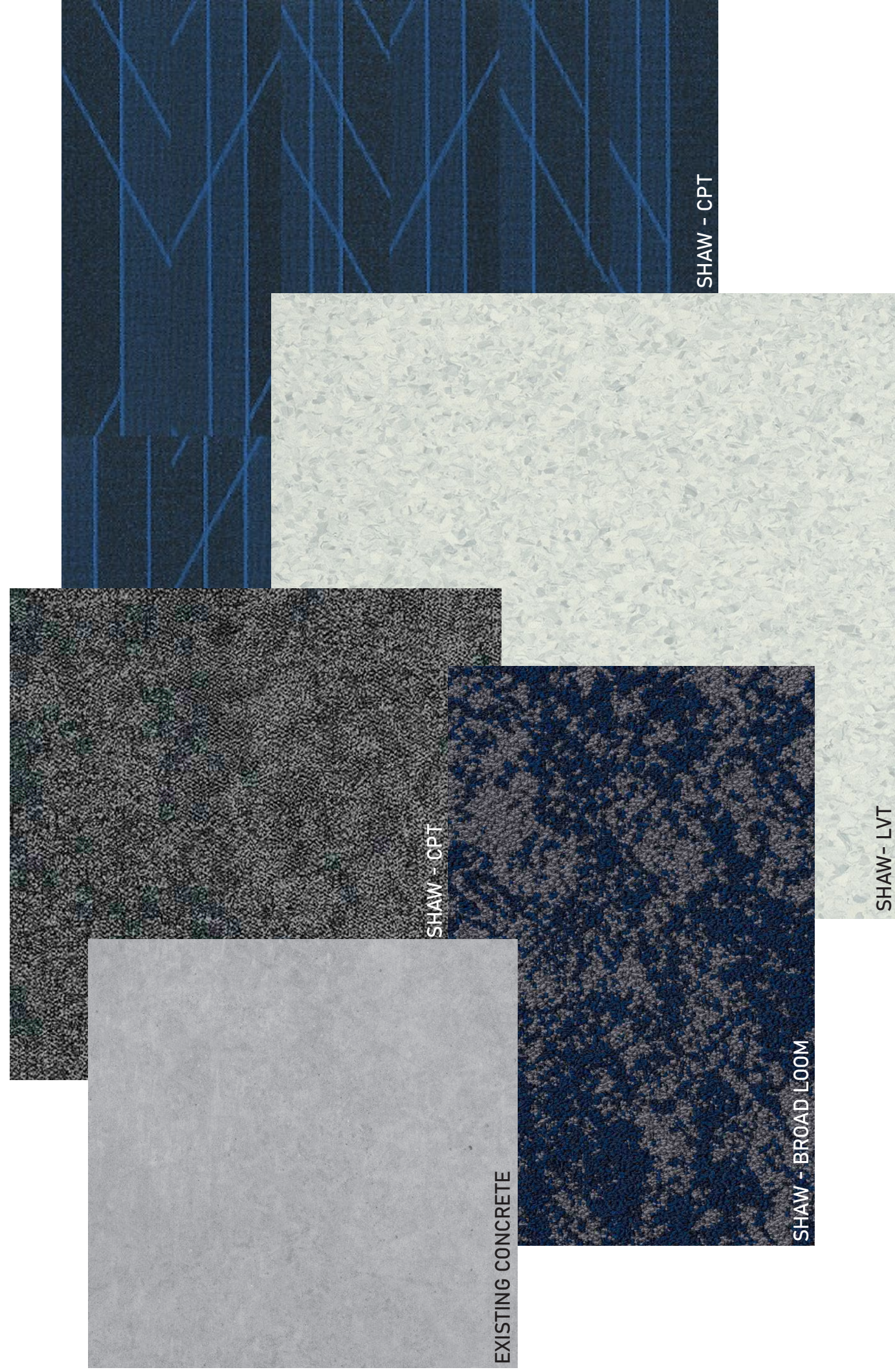


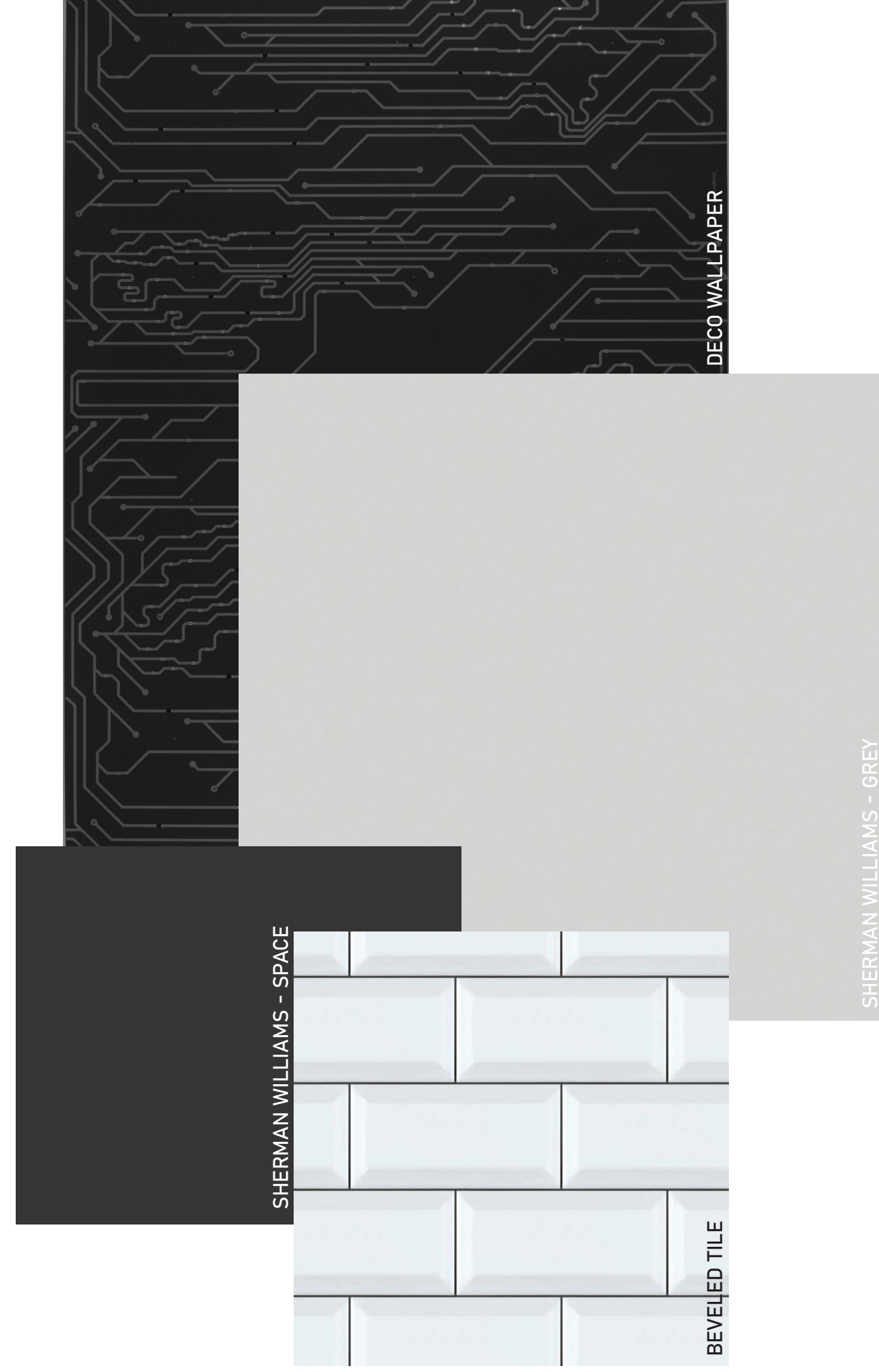
fig. 4

LIGHT FEATURES THROUGH-OUT THE SPACES

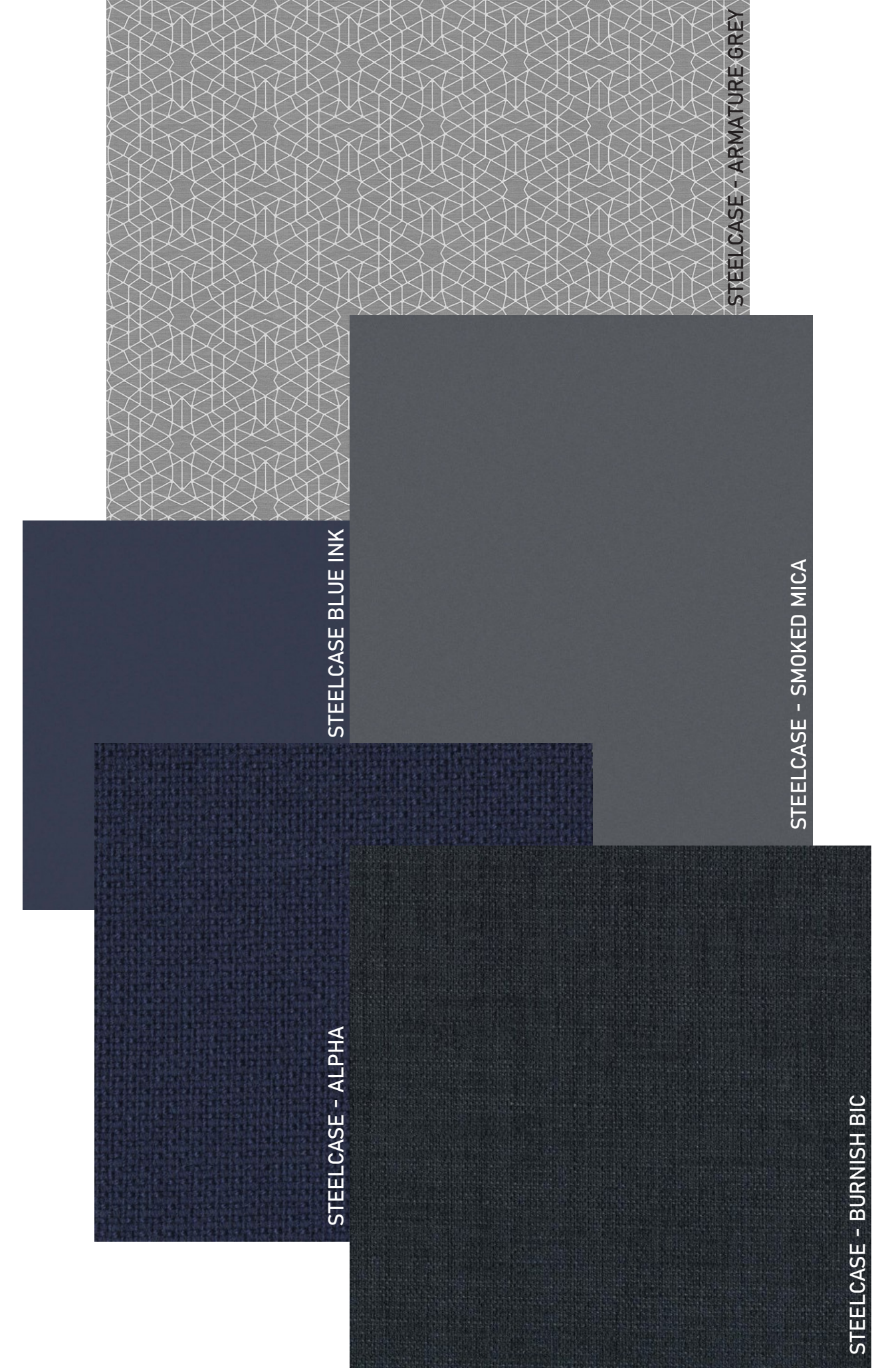
FLOORING



WALLS



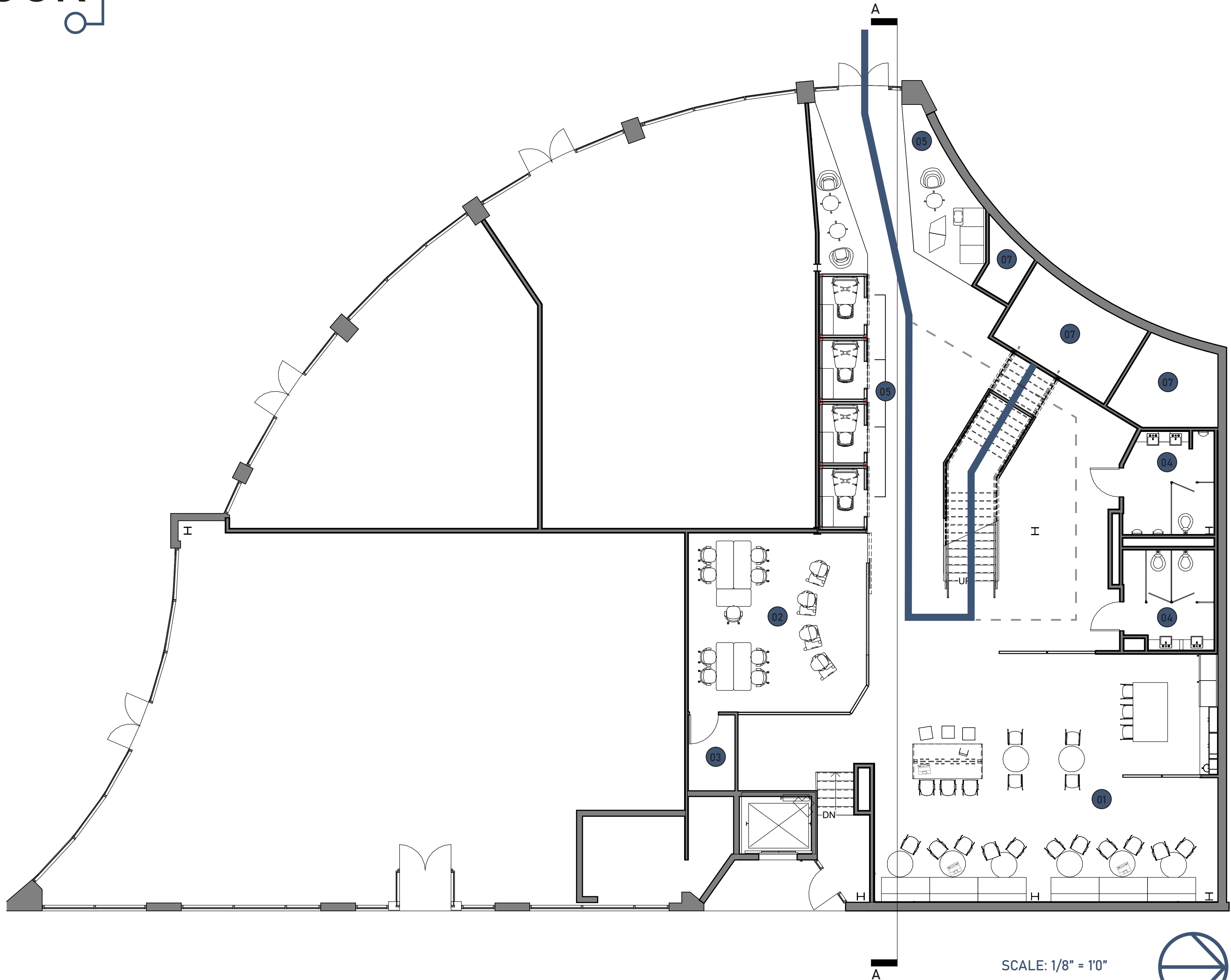
FURNITURE



FIRST FLOOR CIRCULATION

- PRIMARY
- SECONDARY

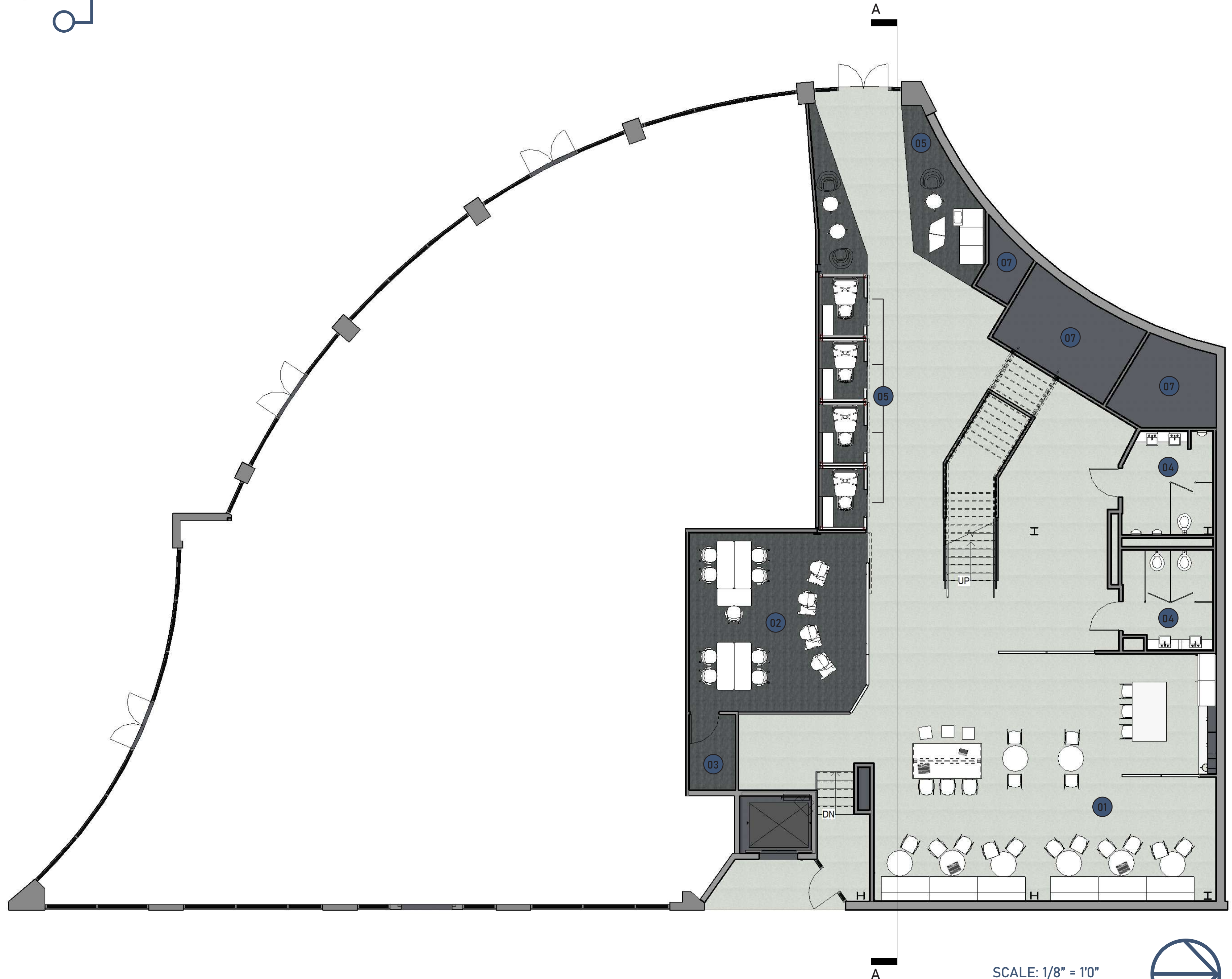
- 01 WORK CAFE
- 02 FORUM
- 03 STORAGE
- 04 RESTROOMS
- 05 IN-BETWEEN SPACES
- 06 PRIVATE ENCLAVE
- 07 NIC



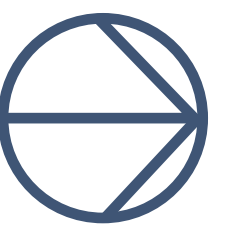
SCALE: 1/8" = 1'0"

FIRST FLOOR MATERIAL PLAN




- 01 WORK CAFE
- 02 FORUM
- 03 STORAGE
- 04 RESTROOMS
- 05 IN-BETWEEN SPACES
- 06 PRIVATE ENCLAVE
- 07 NIC

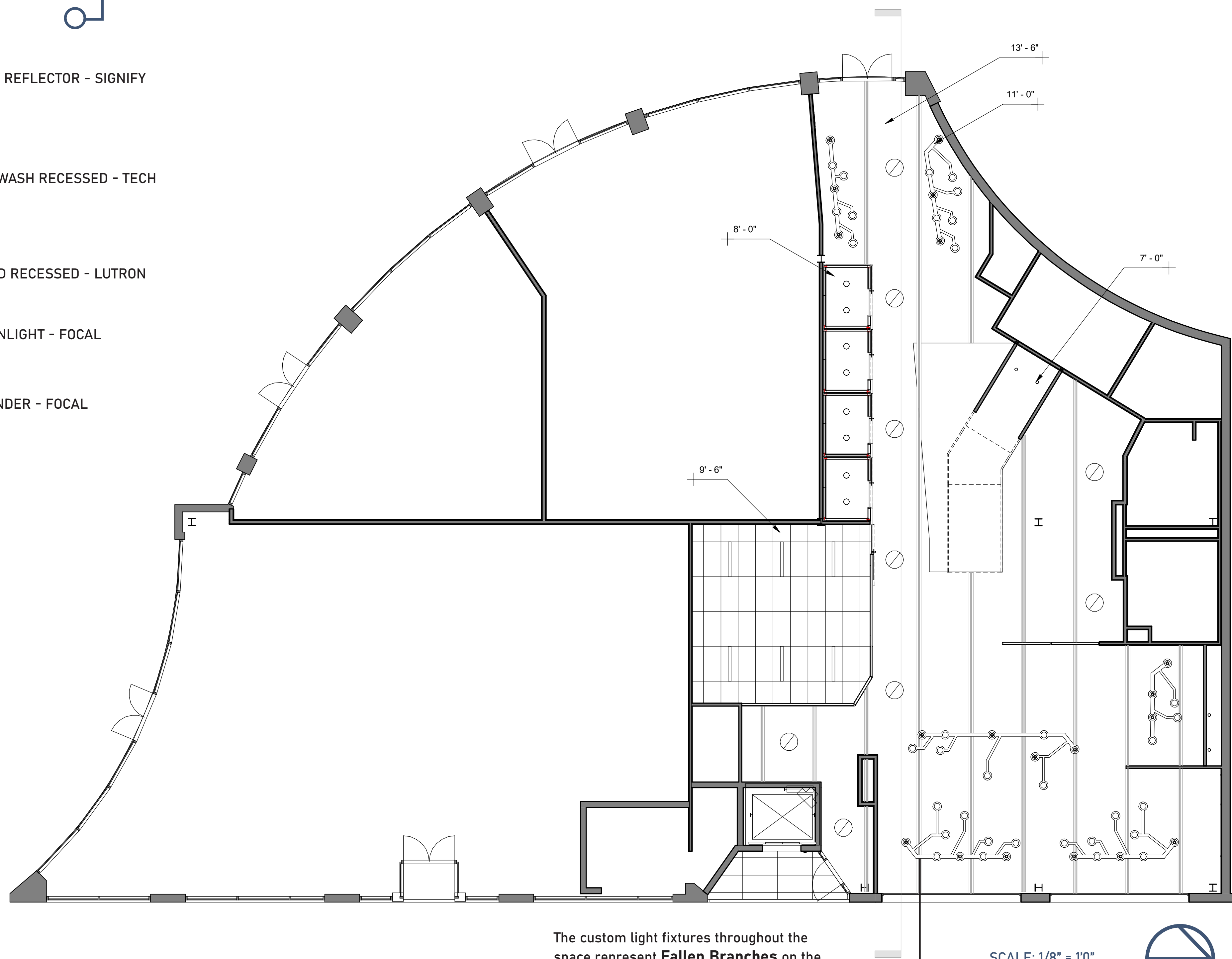


SCALE: 1/8" = 1'0"



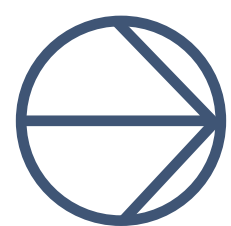
FIRST FLOOR REFLECTED CEILING PLAN

-  HIGH BAY REFLECTOR - SIGNIFY
-  4" WALL WASH RECESSED - TECH
-  D3 ROUND RECESSED - LUTRON
-  3.5" DOWNLIGHT - FOCAL
-  3.5" CYLINDER - FOCAL



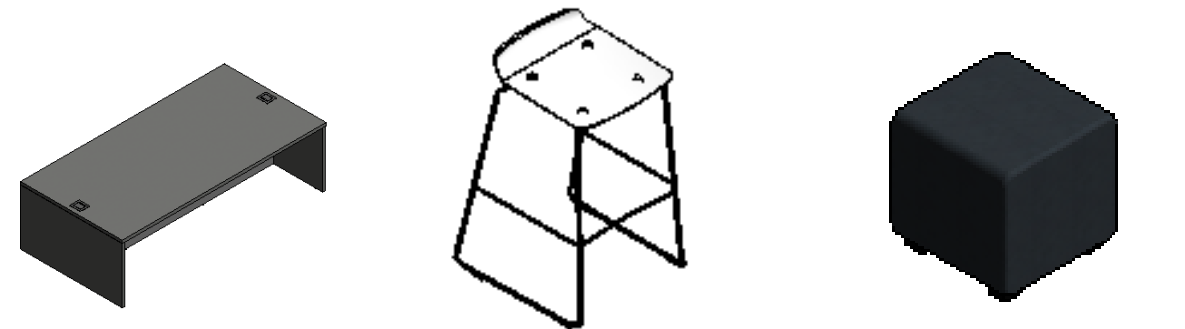
The custom light fixtures throughout the space represent **Fallen Branches** on the figurative "ground" of the second floor

SCALE: 1/8" = 1'0"

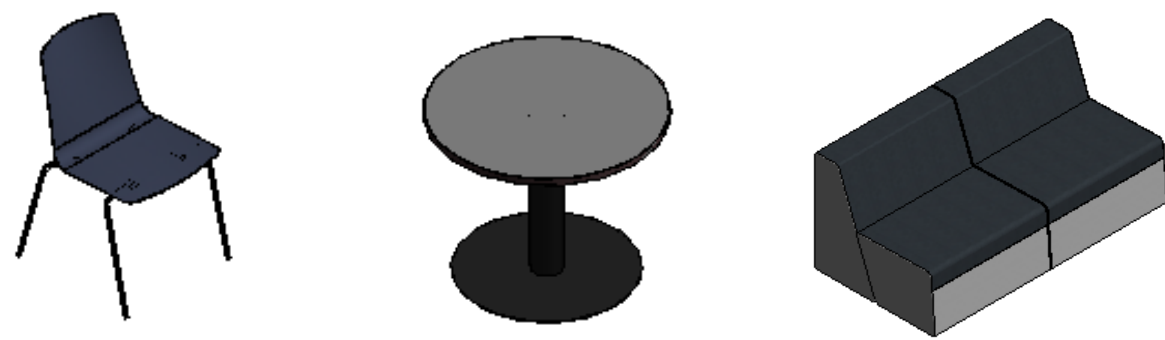


FIRST FLOOR

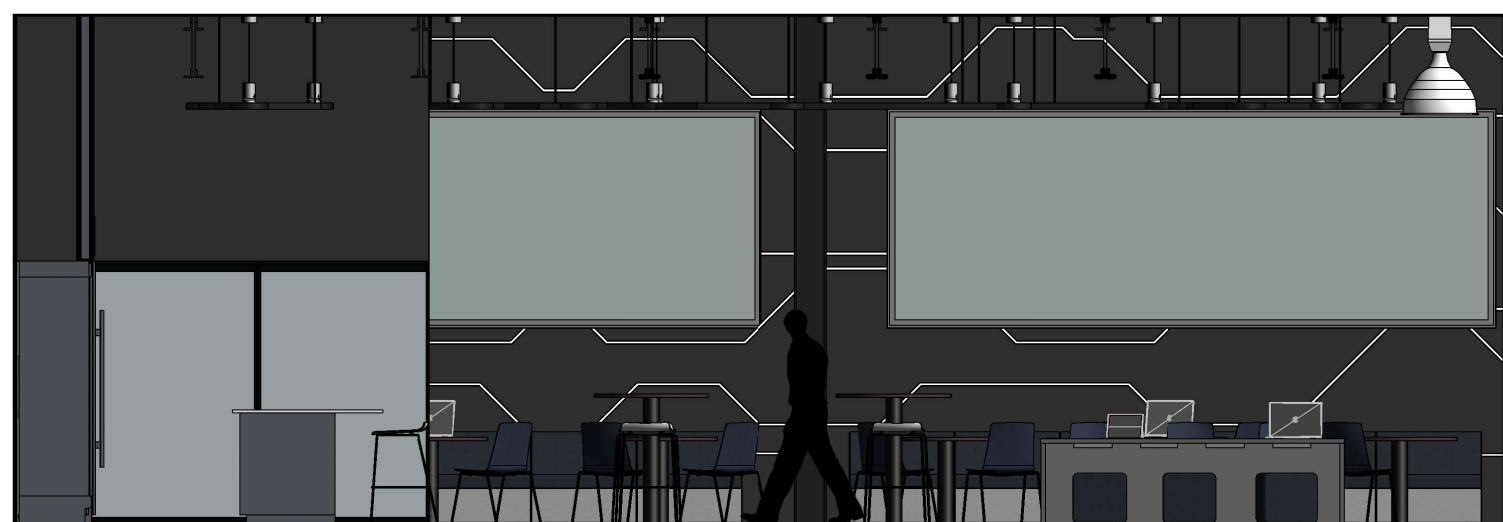
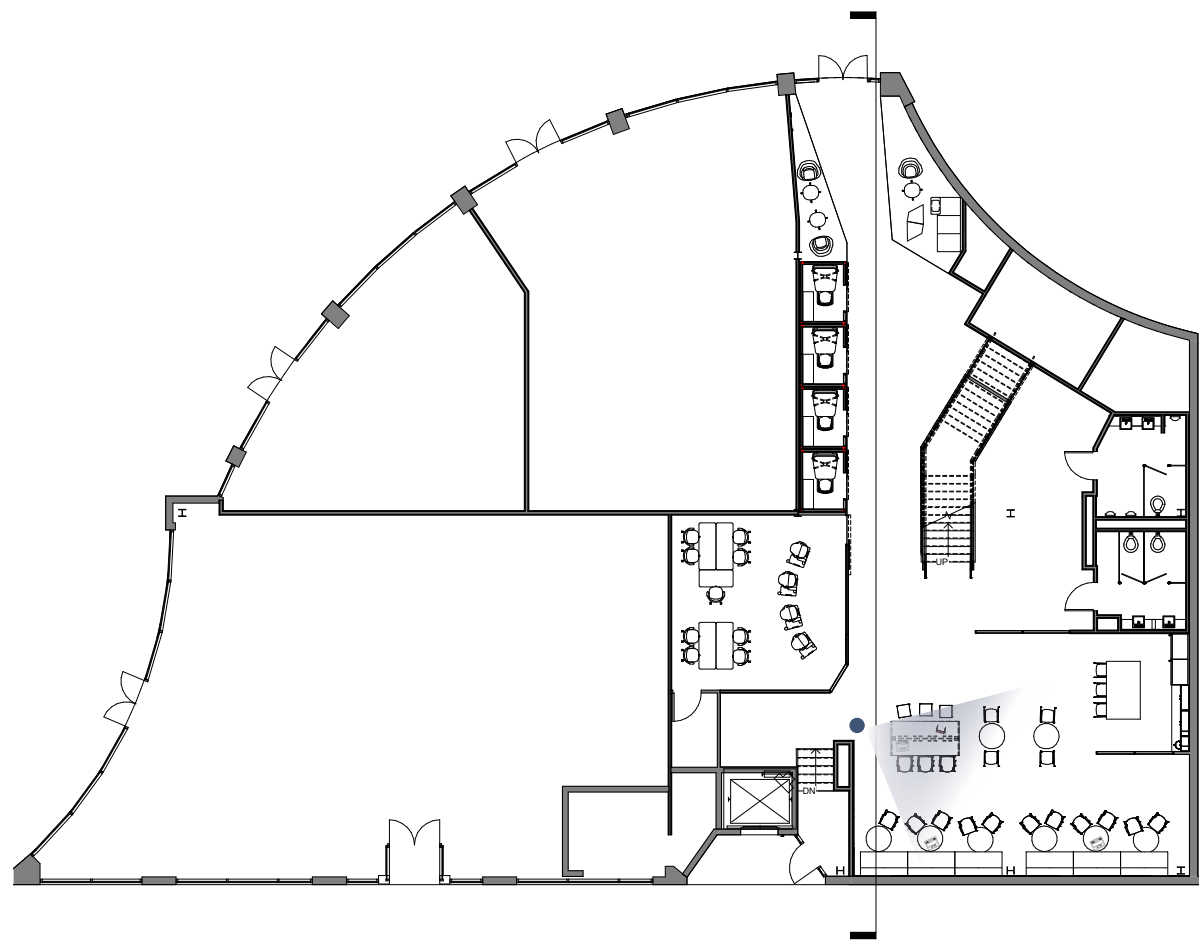
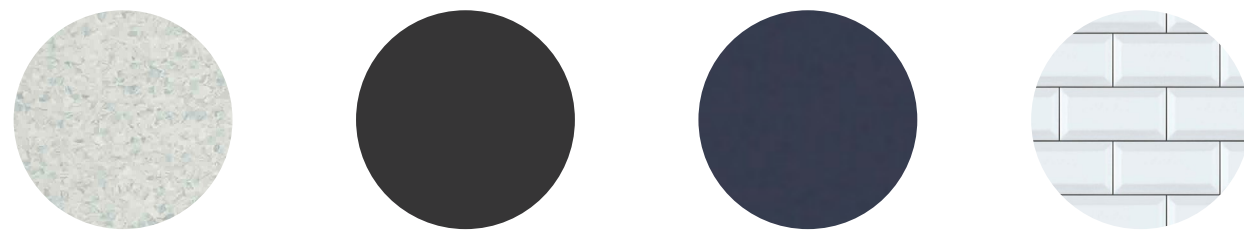
WORK CAFE



CAMPFIRE - BIG TABLE NOOI - BAR STOOL B-FREE - SMALL CUBE



NOOI - CAFETERIA CHAIR GROUPWORK - ROUND CAMPFIRE - LOUNGE



WORK CAFE ELEVATION



FIRST FLOOR CIRCULATION



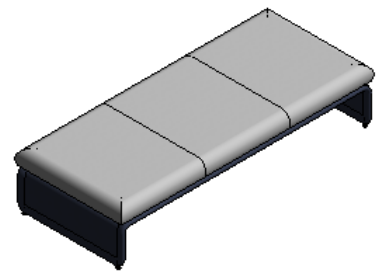
QIVI - 428 SERIES



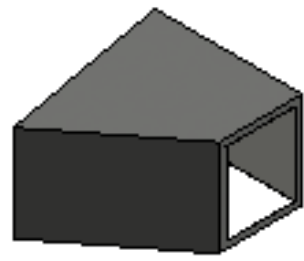
COALESSE - LOUNGE



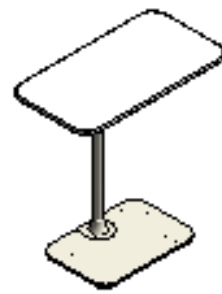
COALESSE - OTTOMAN



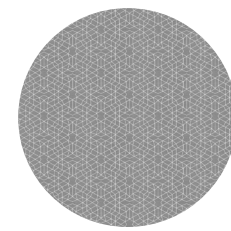
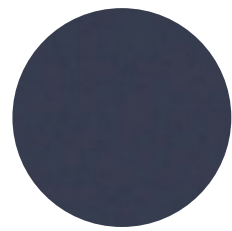
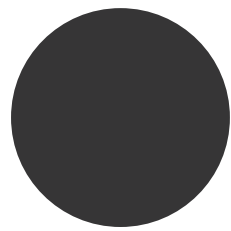
COALESSE - LAGUNITAS



COALESSE - SEBASTOPOL



COALESSE LAG. TABLE



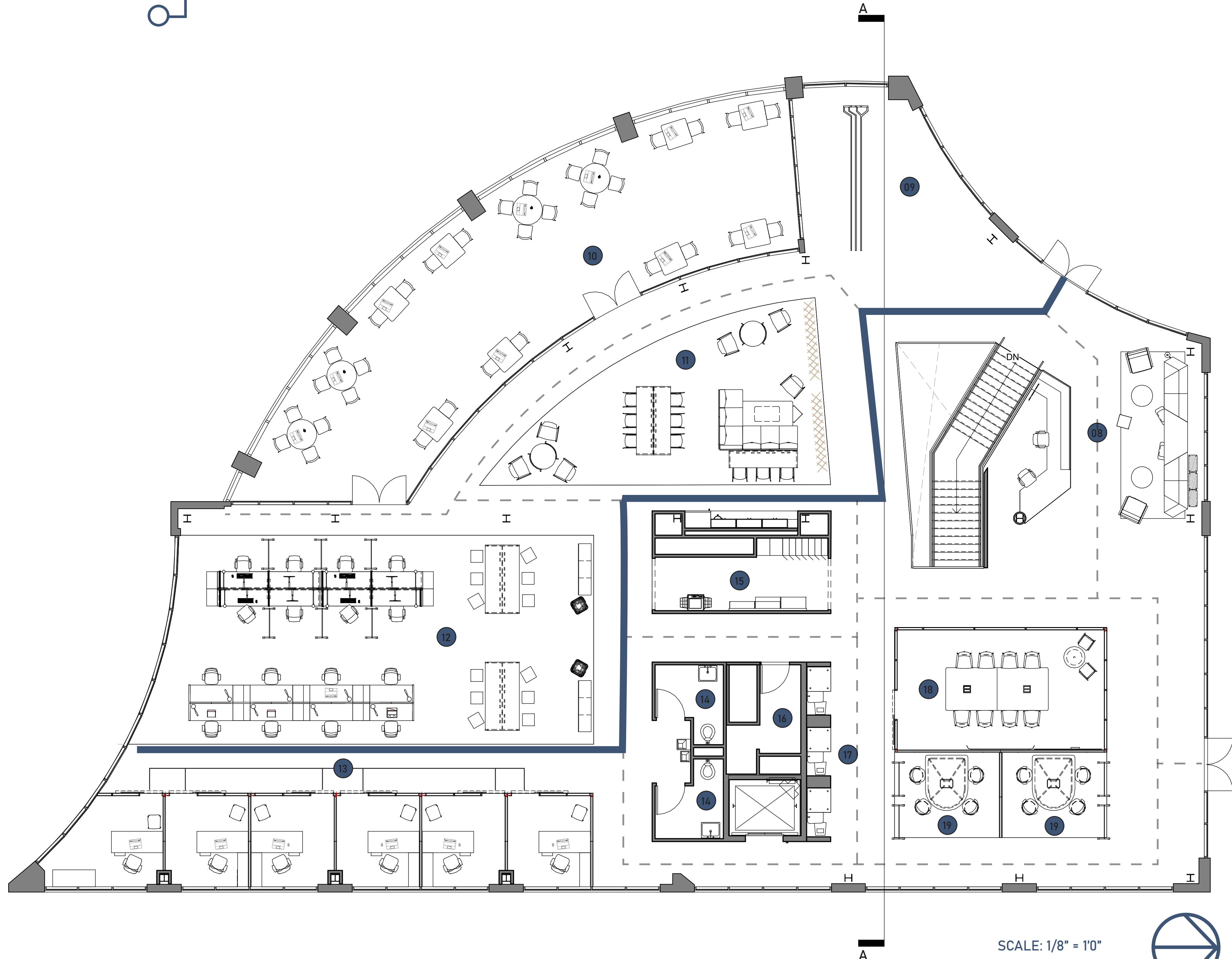
PRIVATE ENCLAVE ELEVATION



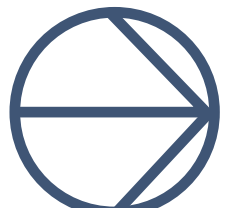
SECOND FLOOR CIRCULATION

- PRIMARY
- SECONDARY

- 08 RECEPTION
- 09 INSPIRATION ZONE
- 10 OUTDOOR PATIO
- 11 IN-BETWEEN SPACE
- 12 OPEN OFFICES
- 13 PRIVATE OFFICES
- 14 RESTROOMS
- 15 RESOURCE CENTER
- 16 MECHANICAL ROOM
- 17 PRIVATE ENCLAVES
- 18 VIDEOCONFERENCE SPACE
- 19 PROJECT TEAM SPACES




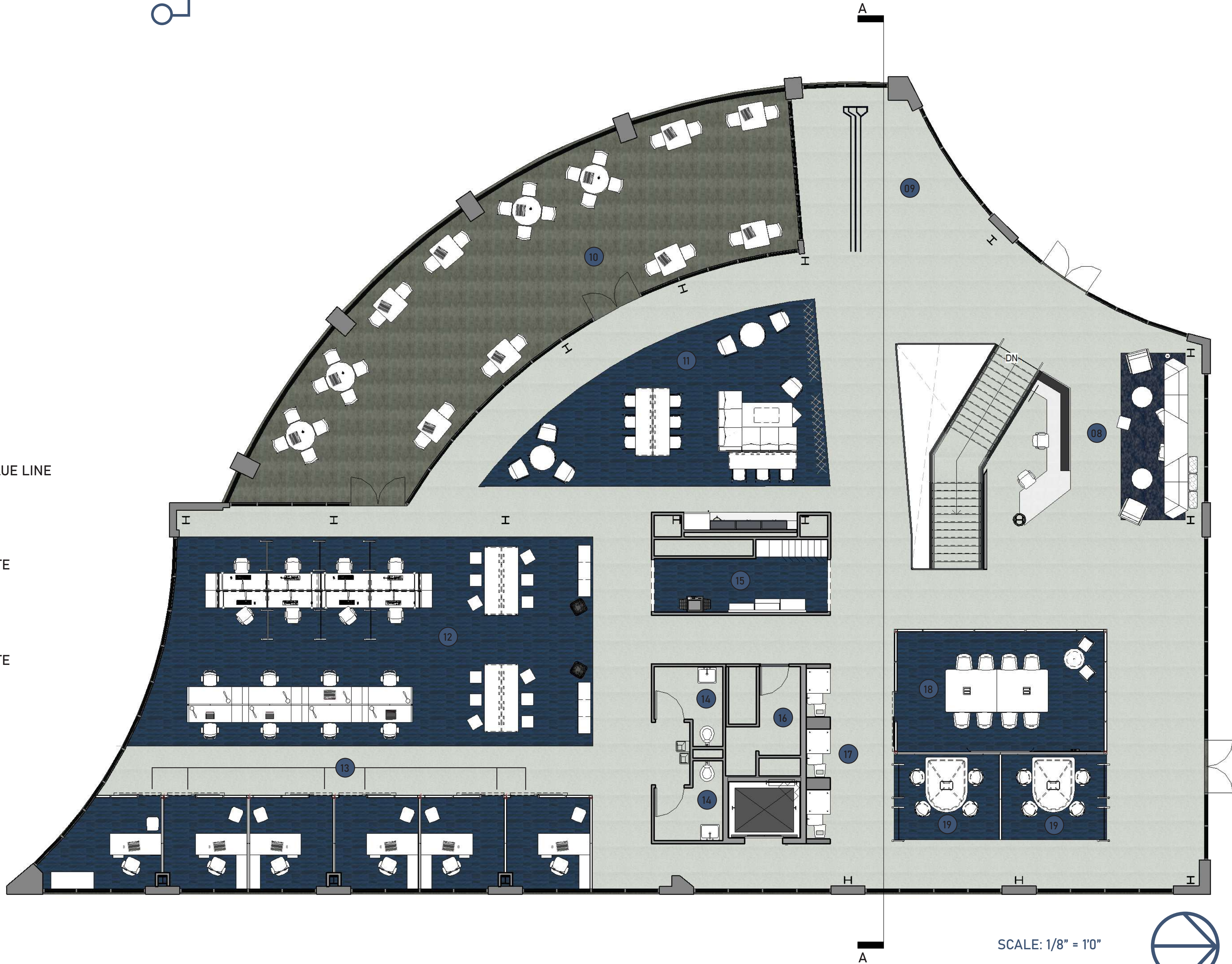
SCALE: 1/8" = 10"



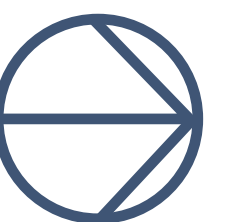
SECOND FLOOR MATERIAL PLAN

- 08 RECEPTION
- 09 INSPIRATION ZONE
- 10 OUTDOOR PATIO
- 11 IN-BETWEEN SPACE
- 12 OPEN OFFICES
- 13 PRIVATE OFFICES
- 14 RESTROOMS
- 15 RESOURCE CENTER
- 16 MECHANICAL ROOM
- 17 PRIVATE ENCLAVES
- 18 VIDEOCONFERENCE SPACE
- 19 PROJECT TEAM SPACES

-  CPT - SHAW BLUE LINE
-  VCT - OFF WHITE
-  VCT - OFF WHITE

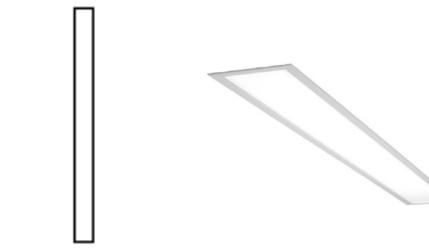


SCALE: 1/8" = 1'0"




SECOND FLOOR REFLECTED CEILING PLAN

 HIGH BAY REFLECTOR - SIGNIFY

 4" WALL WASH RECESSED - TECH

 D3 ROUND RECESSED - LUTRON

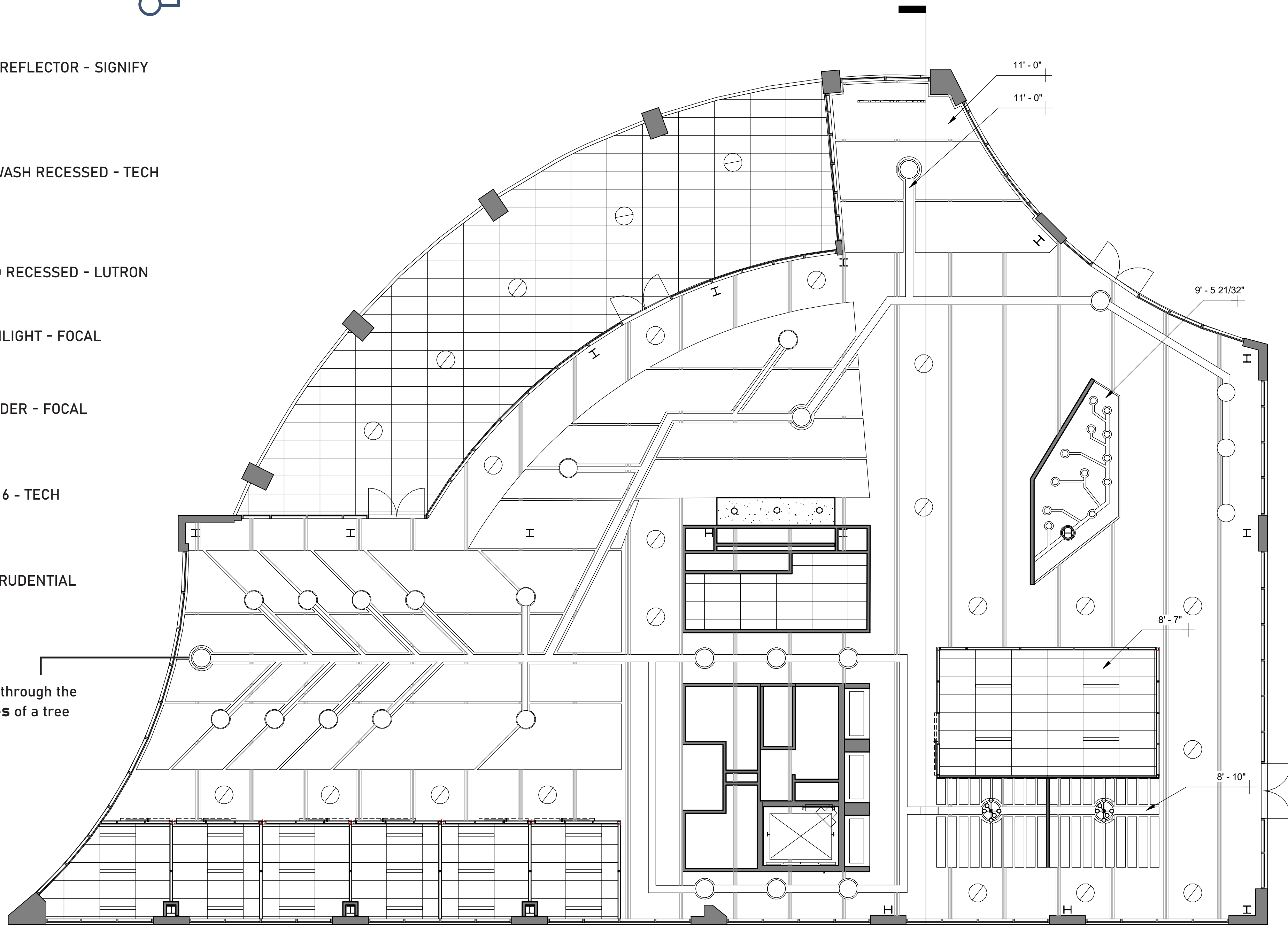
 3.5" DOWNLIGHT - FOCAL

 3.5" CYLINDER - FOCAL

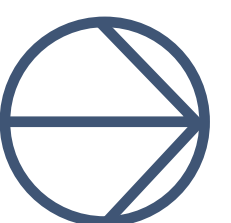
 SPECTICA 6 - TECH

 P3900 - PRUDENTIAL

The main ceiling structure that runs through the work plane represents the **Branches** of a tree



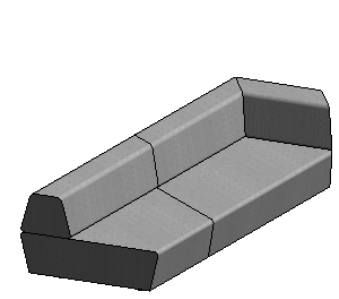
SCALE: 1/8" = 10"



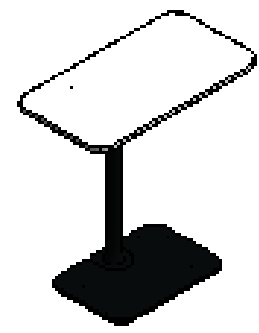
SECTION A-A



SECOND FLOOR RECEPTION



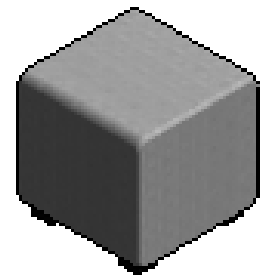
MEDIA SCAPE - LOUNGE



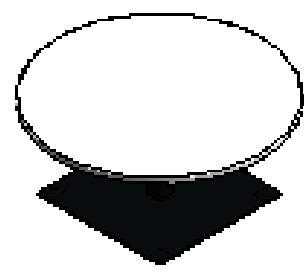
COALESSE - LAGUNITAS



WEST ELM - WORK



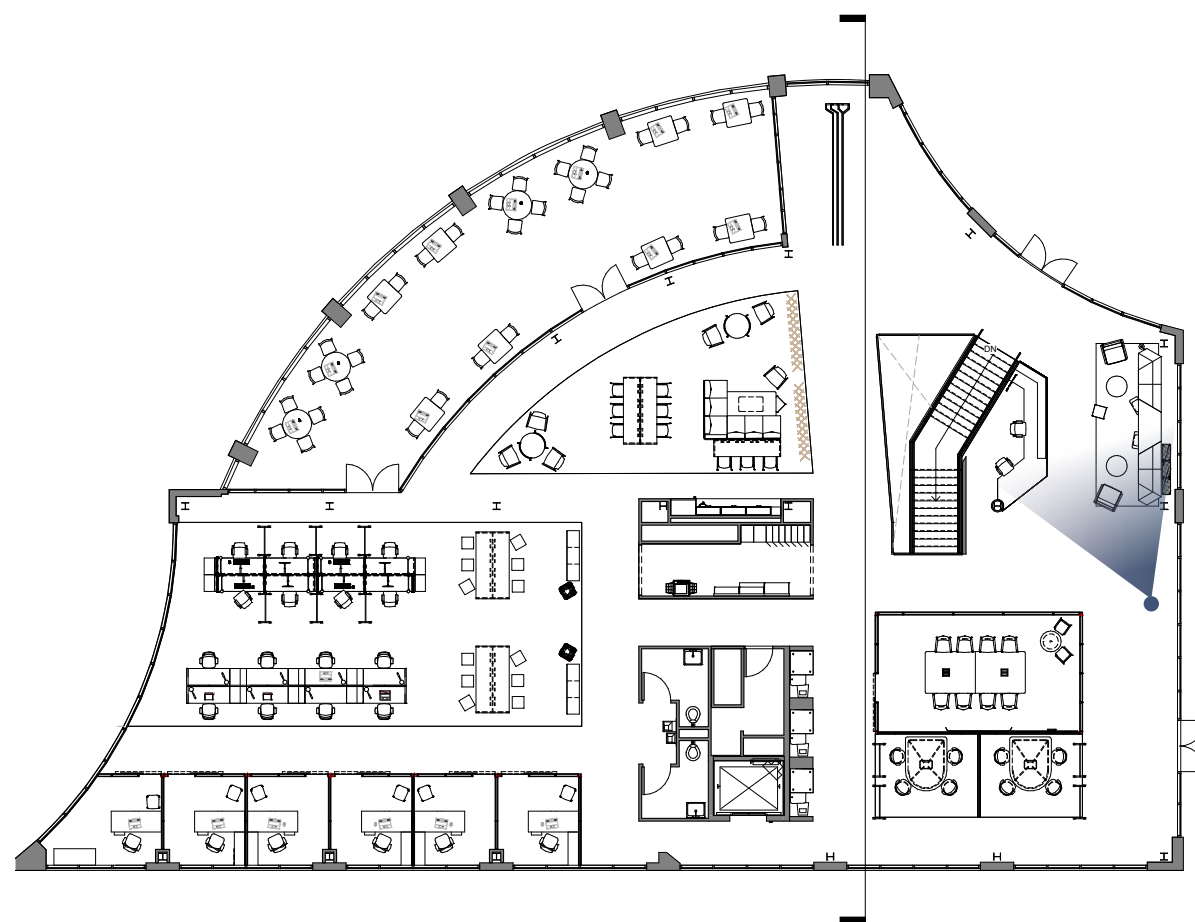
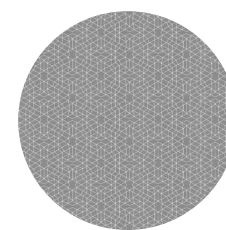
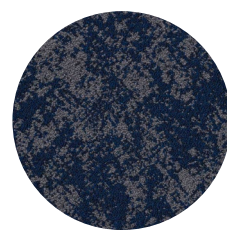
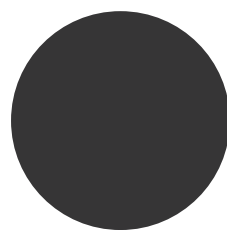
B-FREE - SMALL CUBE



SYLVI - TABLE



GESTURE - WORK CHAIR

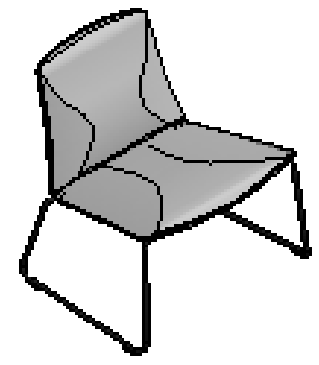


RECEPTION ELEVATION



SECOND FLOOR

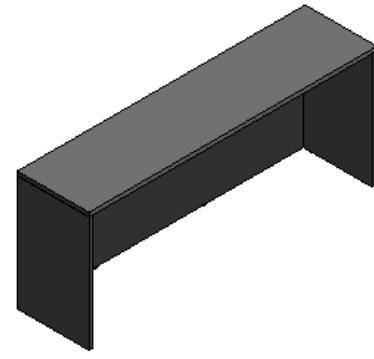
IN-BETWEEN SPACE



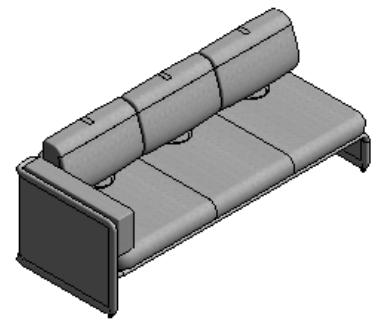
COALESSE - MONTARA



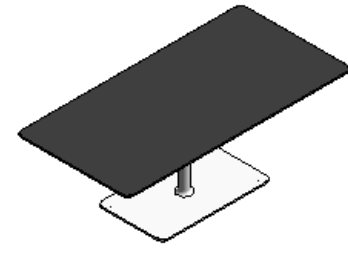
BOLIA - COFFEE TABLE



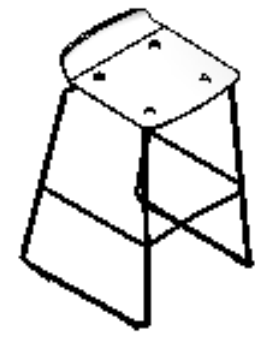
CAMPFIRE - BIG TABLE



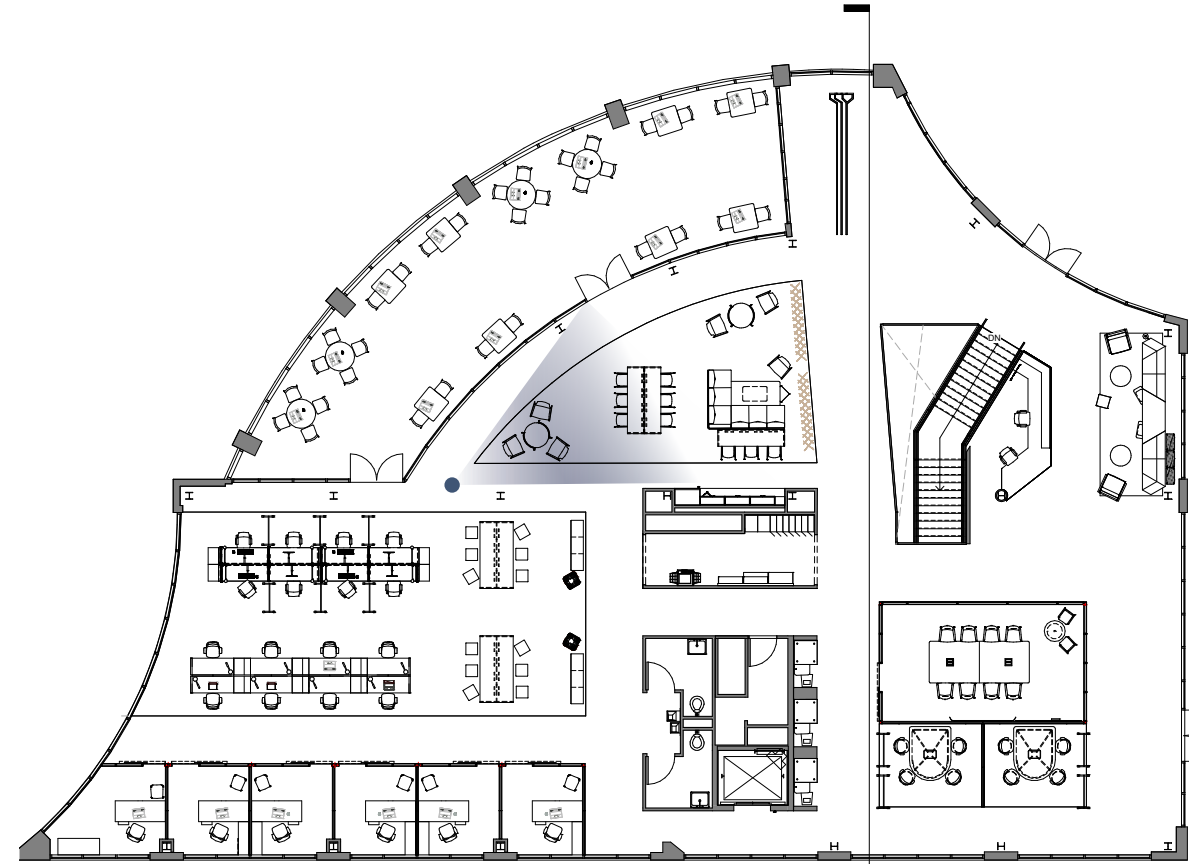
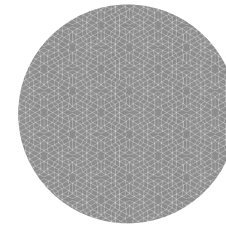
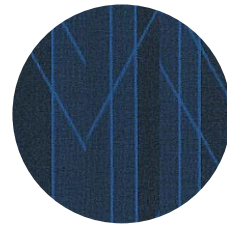
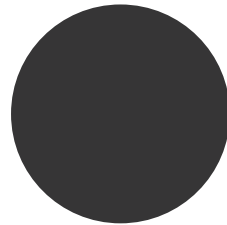
COALESSE - LAGUNITAS 3 SEAT



COALESSE - LAGUNITAS TABLE



NOOI - BAR STOOL

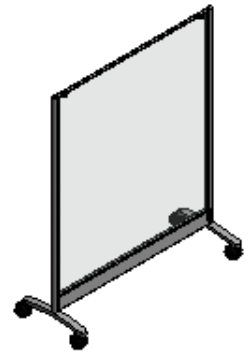


IN -BETWEEN ELEVATION

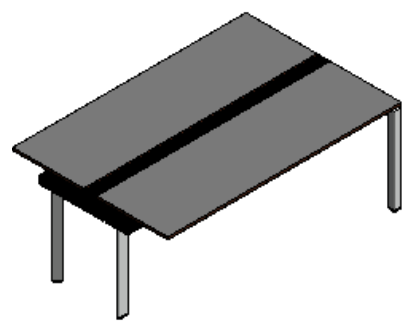


SECOND FLOOR

OPEN OFFICE



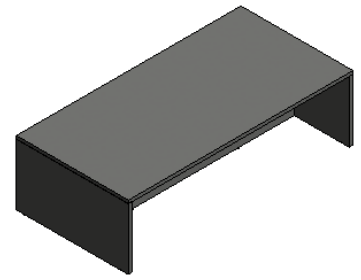
GROUPWORK - SCREEN



FRAMEONE - DUAL SIDED



GESTURE - WORK CHAIR



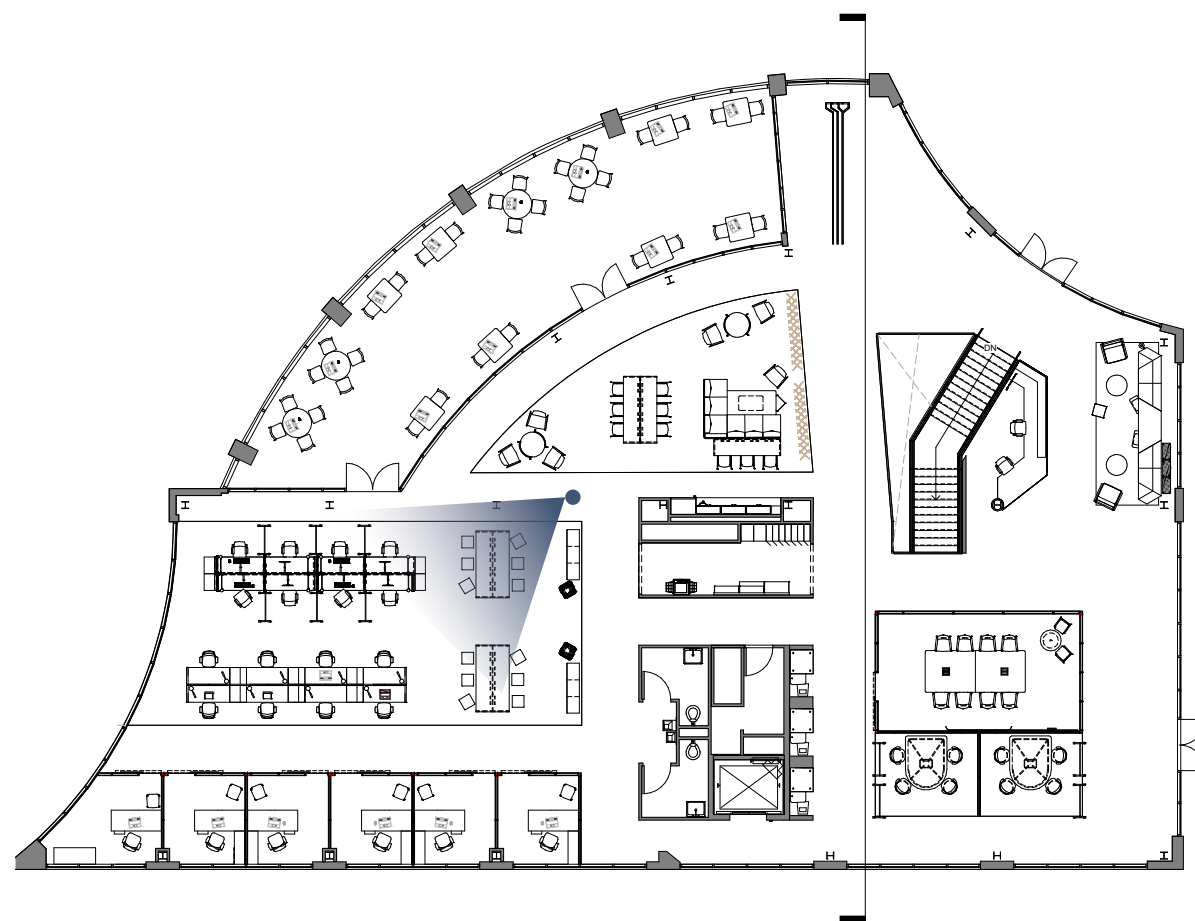
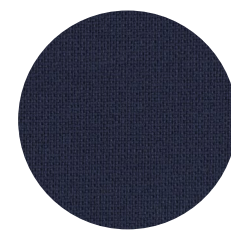
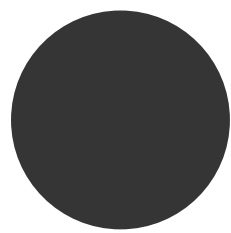
CAMPFIRE BIG TABLE



REPLY - 466 SERIES



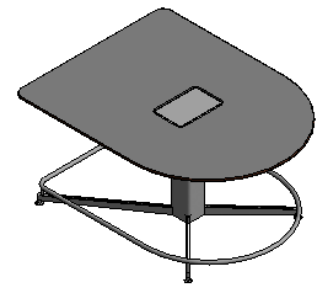
B-FREE - SMALL CUBE



OPEN OFFICE ELEVATION



SECOND FLOOR PROJECT TEAM SPACE



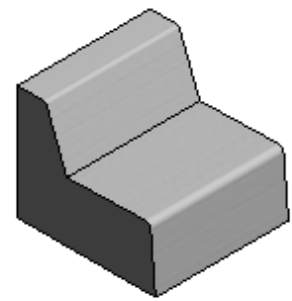
MEDIA SCAPE - TABLE



COBI - 434 SERIES



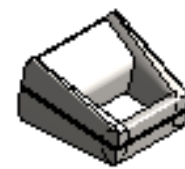
GROUPWORK - SCREEN



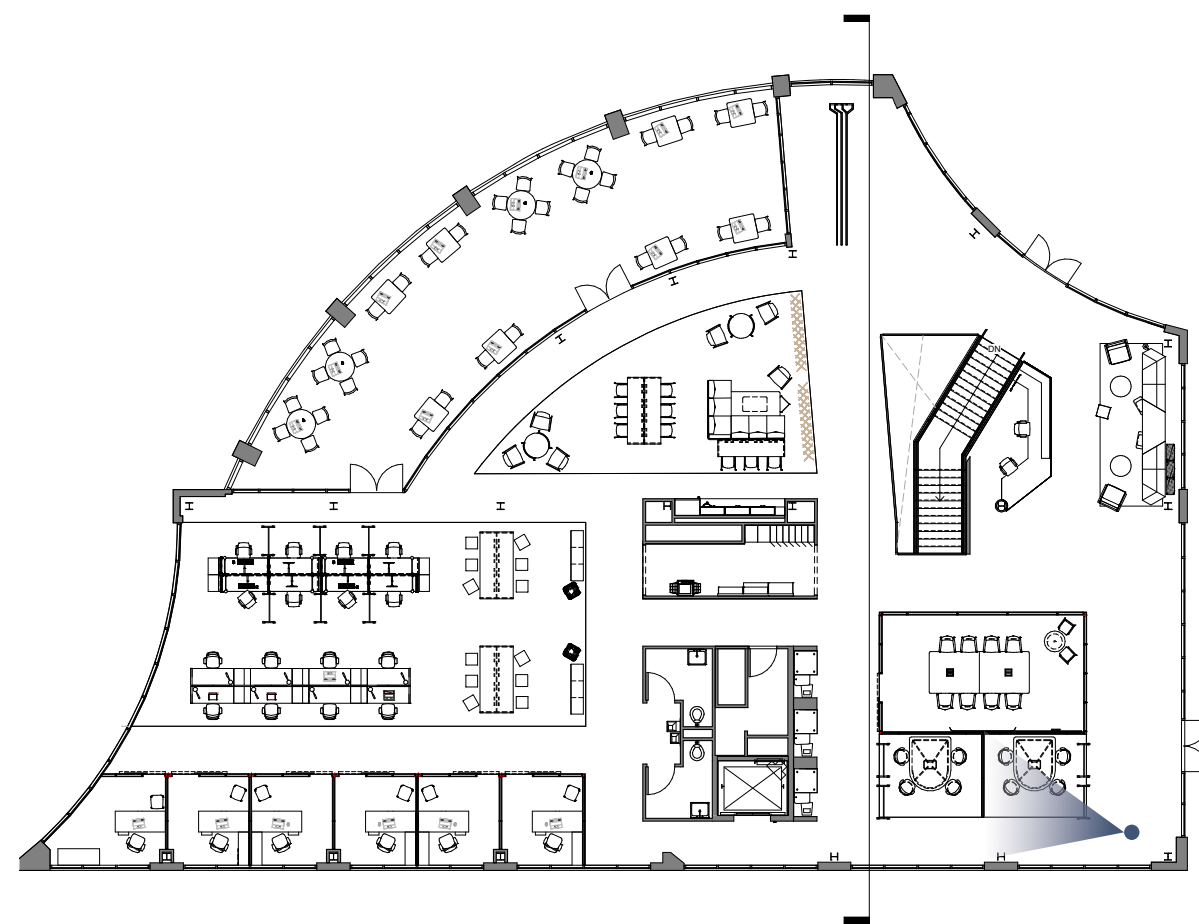
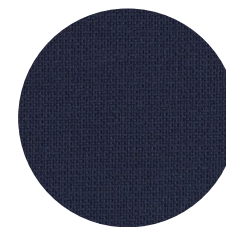
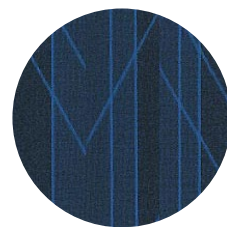
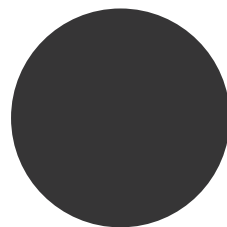
CAMPFIRE- HALF LOUNGE



TURNSTONE - SKATE TABLE



TURNSTONE - FOOTREST



PROJECT TEAM ELEVATION



BIBLIOGRAPHY



CITATIONS

INFORMATION AND IMAGES:

Arpanaksingh. (2019, November 05). Tips That Will Help You Find An Ideal Furnished Commercial Office Space. Retrieved December 05, 2020, from <https://coworkingspacetips.wordpress.com/2019/10/22/tips-that-will-help-you-find-an-ideal-furnished-commercial-office-space/>

Ellis, C. (2019, November 18). What Products Are Made From Trees? Retrieved December 05, 2020, from <https://sciencing.com/what-products-are-made-from-trees-12217179.html>

Interiors, P. (2014, December 04). TMDA_SurveyMonkey_22-May-14_191440. Retrieved December 05, 2020, from <https://www.flickr.com/photos/pivotinteriors/15759328148/>

Jung, B. (2016, October 26). Purpose of a Motherboard. Retrieved December 05, 2020, from <https://smallbusiness.chron.com/purpose-motherboard-55292.html>

Messner, M. (2016, August 23). Perkins+Will uses coziness in a high-tech security firm's office. Retrieved December 05, 2020, from <https://www.archpaper.com/2016/08/perkins-will-prescient-of-fice-chicago/>

Tel Aviv HQ for an American-based company by Auerbach Halevy Architects & Engineers. (2015, November 08). Retrieved December 05, 2020, from <https://architizer.com/projects/palantir/>

cafe.

THANK YOU
NEXT

